



badger



mountain hare



vole



mink



brown hare



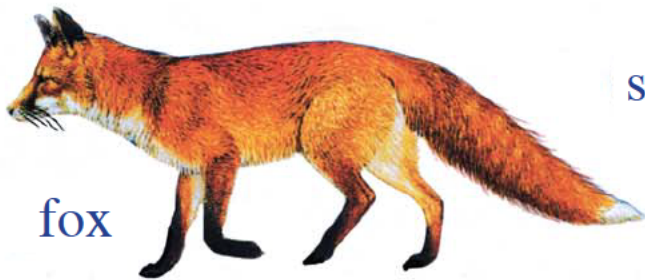
hedgehog



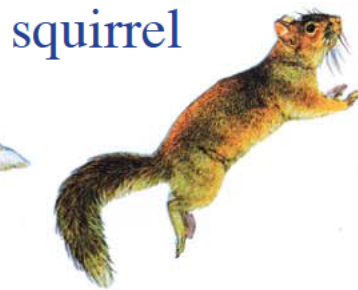
otter



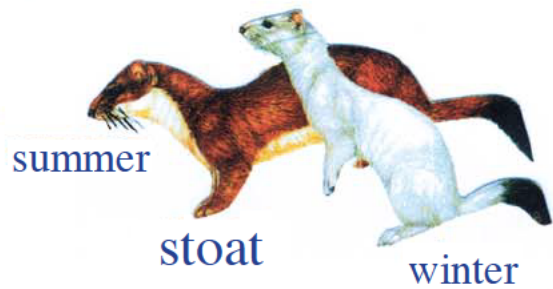
weasel



fox



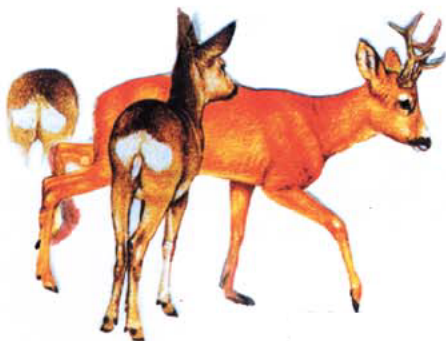
squirrel



summer

stoat

winter



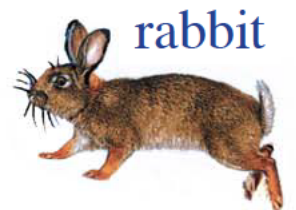
roe deer



shrew



mole



rabbit

# Our Friends in The Hills

**Badger**

Badger has five toe pads in a forward-facing curved line above the main pad.

**Hedgehog**

Usually leaves a four-toed track because small inner toe is held further from the ground.

**Fox**

If you can draw an imaginary "X" in a track without cutting through the pad then it is a fox and not a dog.

**Rabbit**

When running sometimes only claw marks are visible in tracks as only the tips of the hind feet are placed on ground. Hind track is very often an elongated slipper-shaped impression.

**Roe Deer**

Frontal hooves become widely spaced when the roe is galloping.

**Otter**

Webbing between toes sometimes shows in soft ground.

**Hare**

Often only the tips of the digital pads show in a print.

**Shrew**

When running not all interdigital pads will be visible, sometimes are seen. Outside "toes" protrude approx 90 degrees to the side of the track.

**Vole**

Prints classic "star" shape. Claws give apparent "hand" outline.

**Mink**

Large heel pad distinguishes mink from a stoat.

**Stoat**

Tiny prints, not always visible, usually only found in soft ground, silt. Tends to jump rather than walk.

**Weasel**

Inside toe does not always appear in tracks. Leaves groups of 4 prints when galloping.

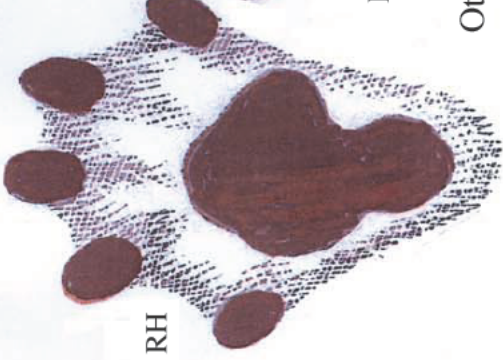
**Mole**

Only claws of fore foot show in tracks as animal walks on the side of this foot

Roe Deer

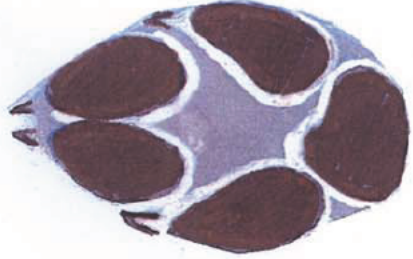


RH



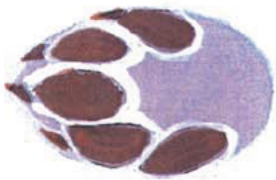
RF

Otter



RF

RH



RF

RH

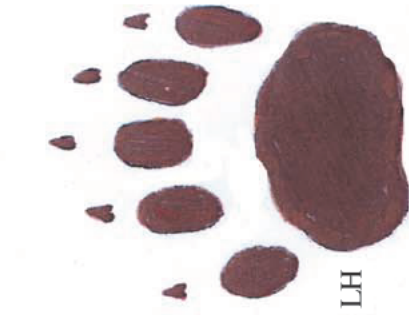
Hedgehog



RF

RH

Mole



LH

Badger



RH

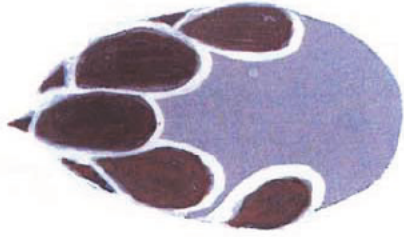
Squirrel



Stoat



Vole



Hare

Fox

